

# Turkey - Syria Solidarity

## Two years of initiatives

FEBRUARY 2025





*The situation is still difficult, particularly for the most vulnerable people*

Interview with **Pascale Moreau**, member of the Turkey-Syria Solidarity Committee

Former Director of the Europe Office of the United Nations High Commissioner for Refugees (UNHCR), Pascale Moreau is a member of the Turkey-Syria Solidarity Committee of Fondation de France. This committee, made up of volunteer experts, was formed in the first days following the earthquakes to define priorities, contact local partners and review support requests. She discusses the developments in the situation and the priorities of Fondation de France in these two severely affected countries.

### What is the current situation in Turkey and Syria?

In Turkey, humanitarian aid has brought significant relief to the people affected, thanks to effective coordination between the authorities and local associations. However, given the considerable damage, much remains to be done, particularly regarding the reconstruction of cities, infrastructure and housing, as well as economic recovery. The most vulnerable populations, particularly those still living in temporary centres or belonging to marginalised groups, are still in an alarmingly precarious situation. Another major concern is the tenants who cannot benefit from the reconstruction of their homes and lack the means to pay rent.

In Syria, the effects of the earthquake have come on top of pre-existing problems linked to years of war. The areas affected are gradually becoming more accessible thanks to recent changes. Nevertheless, the basic needs are still immense, particularly in terms of health and psychological care. Thousands of people are unable to return to their homes for safety reasons or because of non-existent infrastructure. Rebuilding community infrastructure, such as schools, hospitals and other public places, is essential.

### What are Fondation de France's priorities after two years of initiatives?

Throughout these two years, Fondation de France has endeavoured to support projects in all the areas affected by this disaster, even the most isolated, taking into account the specific characteristics of each zone. Today, Fondation de France is focusing its support on helping the most vulnerable populations: women, children, the elderly, refugees, people with disabilities, etc.

Our actions are based on several key principles: sustainability, proximity, adaptability and cooperation. Firstly, to ensure that the initiatives taken have a lasting effect. Proximity is also central to our strategy: by supporting civil society and local NGOs, our initiatives are tailored to the real needs of local people. Our constant adaptability also means we can respond quickly to changing needs in the field. Lastly, cooperation with other local players and NGOs ensures the viability and impact of the initiatives supported. This approach, based on an inclusive and sustainable vision, is essential to enable the populations affected to plan for the future.

### The members of the Turkey-Syria Solidarity Committee

#### CHAIR

#### Christine Robichon

Former diplomat (Maghreb, Middle East, Africa), Officer of the Légion d'Honneur and Commander of the Ordre National du Mérite, director of the French Red Cross Foundation.

#### MEMBERS

#### • Hana Jaber

Associate researcher at the Contemporary World History Chair at the Collège de France. Former scientific secretary for contemporary studies at the Institut français du Proche-Orient. Member of the Migrants Solidarity Committee of Fondation de France.

#### • Muharrem Koc

Director at ASTU (Association de Solidarité avec les Travailleurs Turcs). Former president of RACORT (Rassemblement des Associations Citoyennes des Originaires de Turquie) and the Strasbourg-Méditerranée Association.

#### • Hatice Kup

Interpreting coordinator, Migrations Santé Alsace. Member of the Mental Health for Exiles Committee of Fondation de France.

#### • Rudi Osman

Syrian journalist, President of the Union of Exiled Students in France. Member of the Migrants Solidarity Committee of Fondation de France

#### • Pascale Moreau

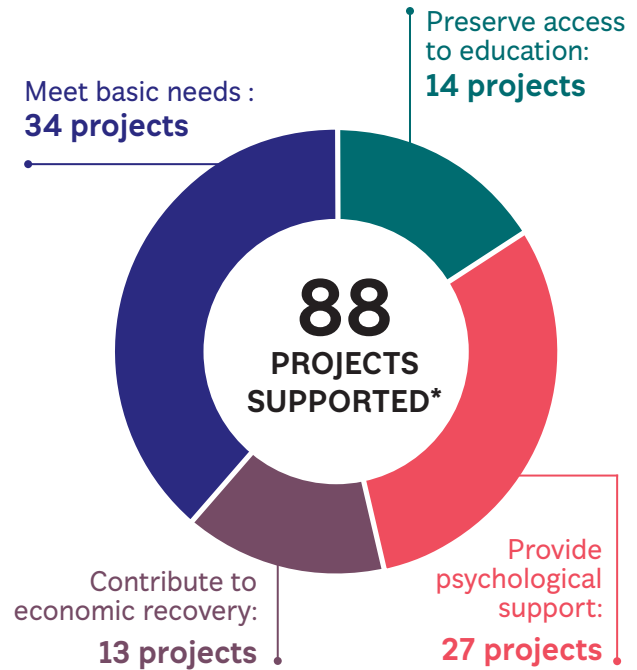
Senior international civil servant, former director of the Europe office of the United Nations High Commissioner for Refugees (UNHCR), former UNHCR representative in Turkey.

# Key figures at 31 December 2024

**124 000**  
DONATIONS

**€13,8** millions  
RAISED

**€9 million**  
committed



\*including 50 in Turkey and 37 in Syria, and 1 in both countries



Yosr Dallegi with members of the Shuder association..

“ Two years after the devastating earthquakes in Turkey and Syria, hundreds of thousands of people are still living in very precarious conditions, in tents or containers, exposed to the winter cold, and expressing an urgent need for psychological help.»

Yosr Dallegi, Emergency Programme Manager, Fondation de France



The Shuder association has built a village of 1,200 containers in Adiyaman, home to more than 7,000 residents.

## Initiatives supported in Turkey and Syria

Southern Turkey and northern Syria were hit by two devastating earthquakes on 6 February 2023, killing more than 50,000 people and leaving hundreds of thousands injured and homeless. Two years after the disaster, Fondation de France remains fully mobilised to meet the needs of the people affected, which are still considerable. €9 million has already been earmarked for 88 initiatives in the affected areas.

### An initiative strategy tailored to each region's specific challenges

In southern Turkey, the earthquakes affected 10 provinces where 15 million people live, including 1.7 million Syrian refugees under temporary protection. Despite the significant mobilisation of the authorities and the population, support for civil organisations, particularly those working for the rights and assistance of minorities, remains essential. In Syria, already ravaged by 12 years of war, the north-west of the territory struck by the earthquake is divided among various actors (Damascus government, Turkish forces, rebel forces). This region, home to over 4 million people, faces major humanitarian challenges against a backdrop of fragile security and fragmented governance. Support is provided mainly by experienced local organisations. Faced with these different local challenges, Fondation de France's intervention strategy has four objectives: meet the needs of disaster-stricken populations, support marginalised groups, encourage inclusive and sustainable initiatives and promote local know-how.

### In Turkey: supporting the most vulnerable populations

At a time when hundreds of thousands of people have lost their homes and remain particularly destitute, Fondation de France is focusing its support on helping the most vulnerable populations, who are often marginalised and deprived of access to aid, particularly people with disabilities, women, children, the elderly, refugees and LGBTI+ people.

In the city of Samandag, the **Emergency Architects** Foundation has rehabilitated seven collective buildings, including several textile industry cooperatives employing exclusively women, a school for around one hundred pupils and a psychological care centre. It has also equipped these cooperatives with solar panels and industrial equipment, and a greenhouse has been built to enable vegetables to be sold.

In the city of Adiyaman, where 80% of the 600,000 inhabitants were affected by the earthquake, the **FISA** association provides psychological and educational care for children. Parent/child therapy sessions supervised by psychologists as well as educational and creative workshops (drawing, singing, dancing, etc.) are provided every day at the association's premises. FISA is also committed to combating child labour, which has become particularly prevalent since the earthquake, by providing legal support with a dedicated team of experts. Thanks to support from Fondation de France, an open-air activity park near three school centres has been built, providing children with a safe place to play and socialise.



*In the city of Adiyaman, children enjoy the activity park built by the FISA association.*

The **Shuder** association, which brings together several associations of social workers, has been combating poverty in Turkey since 1987. In Adiyaman, it has built a village of 1,200 containers to house more than 7,000 disaster victims. The majority of them are Kurdish or Roma minorities, who are particularly excluded. The village has a doctor's surgery, where a doctor and a psychologist see local residents. Social workers are also on hand to help with administrative and legal formalities and to raise awareness about violence against women.

The NGO **KAMER** has built a life centre in Adiyaman to provide women and children from the region with a safe space to work in, as well as sanitary facilities. The centre offers women psychological support (one-to-one sessions with psychologists) and medical, legal and administrative support, as well as acting as an intermediary with the public authorities. Professionals also assist them in finding a new income-generating activity. There is a play area and educational activities for children. A similar centre has been set up in Hatay for women and children with disabilities. Nearly a million women and children have already benefited from the support of these structures.

In Hatay province, the NGO **Handicap International** and its local partners, supported by Fondation de France and AFD, are responding to the medical and psychosocial needs of the population. Medical services include rehabilitation sessions, medical assistive devices, psychosocial support, physiotherapy, mental

health awareness sessions and therapeutic workshops to combat psycho-traumatic disorders. The NGO also helps the local population, particularly people with disabilities, to access local social services.

### **In Syria: meeting basic needs and healing bodies and minds**

While hundreds of thousands of people remain homeless and destitute, access to basic needs remains a priority. Fondation de France supports projects to purchase and distribute basic necessities. In the city of Idlib, an NGO\* is working in the refugee camps to improve their living conditions, particularly those of around 50 visually impaired women in precarious situations: fuel for heating, tents, solar panels and materials to protect them from the cold, rain and snow. In Afrin, the NGO is supporting 435 families, or around 2,500 people, living in very difficult conditions in tents and damaged buildings. It has installed 30 insulated tents and 50 solar units to provide hot water and electricity.

*\*These associations cannot be named for security reasons.*



*In the city of Afrin, a Syrian NGO\* is setting up tents in the refugee camps.*

*In the container village built by the Shuder association in Adiyaman.*

In Aleppo, another NGO\* is supporting 150 displaced children affected by the earthquake, ensuring that they are sheltered with their families and receive supplies (tents, heaters, warm clothing) to face the winter. The NGO has also built secure, heated learning spaces so that the children can continue their education. They also receive psychosocial support.

Access to drinking water remains difficult in many regions. In the Sheran sub-district for example, an NGO\* has rehabilitated a well to supply 39 villages. This initiative not only reduces pressure on other existing water sources, but also the waiting time for water to be collected and distributed by tanker, while ensuring sustainable and safe access to this essential resource.

Health needs are also immense. Nearly a third of the population in the north-west is thought to be disabled as a result of the war and earthquakes. Hospitals in

this region of Syria are continuing to see a massive influx of people injured in the earthquake, with many medical staff having disappeared following the disaster. In addition, the trauma caused by these events requires appropriate psychological care. In the Al-Kamouneh refugee camp, an association\* supports 85 particularly vulnerable children, some of whom are orphans or separated from their families. The association has built a centre to shelter them and provide them with basic necessities. These children receive educational support from professionals, personalised psychological support and medical care, particularly the children with disabilities. The association is also working to reunite families.

*\*These associations cannot be named for security reasons.*

To learn more about our initiatives, visit [fondationdefrance.org](https://fondationdefrance.org)

## Account of resources and expenditure for Turkey-Syria Solidarity 31/12/2024

RESOURCES	Total	%
Resources collected from the general public and other private funds	13 045 752	94 %
Grants from local authorities	529 612	4 %
Other income	25 187	0%
Financial income	283 252	2%
<b>TOTAL RESOURCES</b>	<b>13 883 803</b>	<b>100 %</b>
EXPENDITURE	Total	%
Social missions	9 383 046	92 %
Grants awarded to field operators for projects	9 091 311	97 %
Costs of implementing and monitoring initiatives	209 496	2 %
Staff costs	82 239	1 %
Donation processing fees	489 059	5 %
Donor information costs	137 391	1 %
Operating costs	173 187	2 %
<b>TOTAL EXPENDITURE</b>	<b>10 182 683</b>	<b>100 %</b>

## THANK YOU

We would like to thank all those who have worked alongside us:

**Thank you to the hosted foundations** that support our initiatives: Fondation Anne-Marie Moreau - Fondation Brico Dépôt - Fondation Clasquin - Fondation Daniel et Nina Carasso - Fondation KIWANIS France Entraide - Fondation Les ailes - Fondation Montpensier - Fondation Mustela - Fondation Pajol - Fondation Philippe Daher - Fondation Présents - Fondation Setec - Fondation Sophie Rochas - Fondation Talents Solidaires - Fondation Valérie Messika.

**Thank you to all the donors who are taking part in this solidarity movement.** We are moved and grateful for this vast outpouring of generosity.

**Thank you to the companies, local authorities and media partners** that have supported us, in particular ALCAN - ALD Partner - ALD SA - Auchan Conseil départemental du Val de Marne - Conseil Départemental du Val d'Oise - Engie - Eurométropole de Strasbourg Fondation Engie - France Télévisions - SAFIC - SFIL - Thales - Ville d'Evreux - Ville de Tremblay-en-France